



M4 FRB - FIRE & WEATHER RESTRICTIVE BARRIER

M4 FRB is an innovative and cost-effective fire restrictive barrier for use in structural exterior walls that is composed of a proprietary cement slurry and bound with multiple layers of high strength, premium and alkali-resistant fiberglass mesh. Simply install a single layer of 1/8" thick M4 FRB panel to the exterior facing of any 7/16" sheathing (DOC PS1 / PS2 OSB or Plywood) and boost most structural wood framed exterior wall assemblies to a 1-hour fire-rating. M4 FRB also meets industry standards as a weather restrictive barrier (WRB) for added protection while saving time and money on your projects. Key features and benefits include:

Fire Resistance

- ASTM E119 – 1-hour rated load bearing wall
- ASTM E84 – 30 min. extended duration (Class A)
- Fire tested on both sides of the wall assembly
- Ideal for wildfire urban interface areas (WUI)

Weather Restrictive Barrier

- ASTM E331 – Water Penetration Testing
- ASTM E96 – Water Vapor Transmission Testing
- Uses industry standard finishing methods

Cost Effective

- Eliminate extra layers of gypsum board
- Eliminate need for added WRB
- Lightweight & easy to handle
- Quickly installs with staples
- May reduce insurance costs

Health & Safety

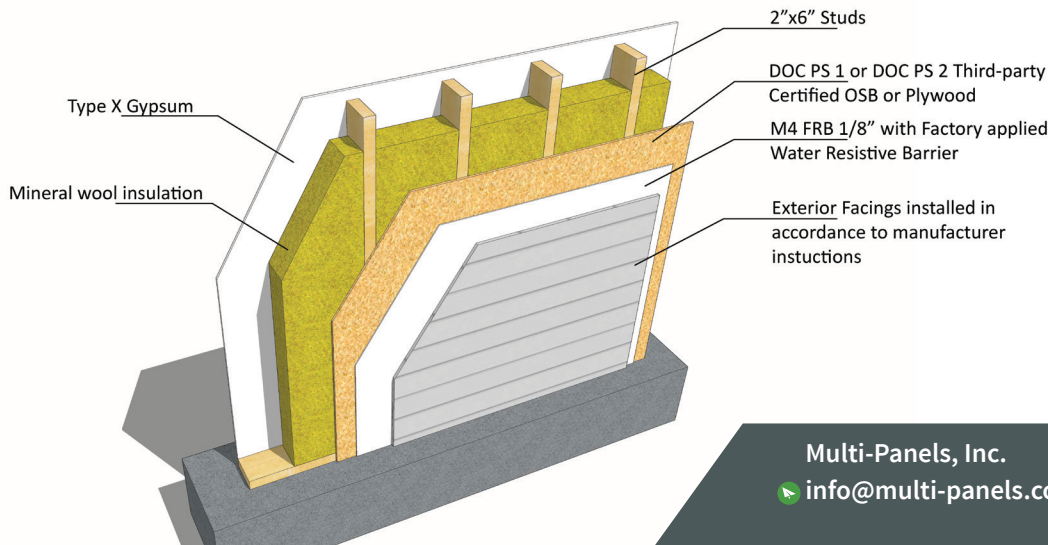
- No Silica, Asbestos, Formaldehyde or VOC's
- Does not support mold growth
- Passes corrosion testing for extended wet exposure to steel, aluminum & copper
- No food value to termites and pests

Quality

- Each batch subject to third party QC testing
- Highest purity raw materials used
- Premium, high strength alkali-resistant mesh

Ideal For:

- Multi-story Residential
- Condos / Apartments / Hotels
- Retrofit Applications
- Wildfire Zones & WUI



PHYSICAL AND MECHANICAL PROPERTIES

PROPERTY	STANDARD	VALUES
Surface Burning Characteristics	ASTM E 84	0 Flame / 0 Smoke
Noncombustibility	ASTM E 136-19	Passed
Corrosion Resistance	ASTM C665	Passed (Steel, Aluminum, Copper)
Surface Burning – with Sealed Face	ASTM E 84/ASTM E 2768-1	Passed 30 min – Class A
Silica Content	MSDS	No Silica
Asbestos Content	MSDS	No Asbestos
Formaldehyde Content	MSDS	No Formaldehyde
Chloride Content	EN 14582:2007	No Chloride (< 1%)
Mold Resistance	ASTM D3273	10 (Scale 1-10, 10 being best)
Freeze Thaw Resistance	ASTM C1186	Pass
Humidity Absorption	72F – 94% RH	<5% (exterior sealed face)
Humidity Deflection	ASTM C1396	< 1/16” Deflection
Expansion from dry to wet	ASTM D1037	< 0.15%
PH Value	MSDS	11
Density	ASTM C1186	~ 64 lbs/ft ³
Manufacturing Tolerance Thickness, Width, Length	ASTM C1186	+/- 0.5%

Some results list minimum performance requirements per referenced standards. Actual performance shall be considered equal or better.

FIRE-RATED EXTERIOR STRUCTURAL WALL SYSTEM

PROPERTY	STANDARD	VALUES
Fire-Rated Wall Assembly	ASTM E119 (both sides)	1-Hour Structural Exterior Wall Assembly
Structural Rating	2018 NDS	Allowable Axial Load of 2,374 lbs/ft (34.65 kN/m)
Water Penetration Testing	ASTM E331	Pass
Water Vapor Transmission	ASTM E96	Pass

Assemblies must be built as-tested to achieve published performance, more details available at www.multi-panels.com or upon request. Some results list minimum performance requirements per referenced standard. Actual performance shall be considered equal or better. Board seams and joints must be sealed with liquid flashing or flashing tape fulfilling IBC as per AAMA 711 and installed per supplier instruction.

Fasteners:

16 gauge staples having a ½” wide crown and 1½” long leg

Flashing:

Approved with SIP-Seal & Sika.
Ask for Data Sheets.

Warranty:

The M4 FRB warranty covers the certification scope/values for a period of 10 years, beginning on date of delivery, for details see Warranty terms.

SPECIFICATION APPROVALS

Project Name	
Location	
Contractor Architect	
Date	

SIZE & PACKAGING

Dimensions	1/8” Thick x 4’ x 8’
Weight	~ 0.7 lbs/sf (22.5 lbs ea)
Color	Off-White
PCS / Pallet	180 pcs

Notes:

Important: All applications to be reviewed and approved by licensed design professional as meeting requirements of application & local building code. Download current and complete installation specifications & testing data online at www.multi-panels.com. Failure to follow current installation instructions may affect product performance and warranty coverage.